

Link-Belt® LS-238RH₅

LS-238RH-5 CRANE CAPACITIES:

(in metric tons)

Working radius (m)	Boom length (m)																		
	18.90	21.25	24.40	27.45	30.50	33.55	36.60	39.65	42.70	45.75	48.80	51.85	54.90	57.90	60.95	64.00	67.05	70.10	73.15
5.0	100.0																		
5.3	100.0																		
6.0	84.9	79.0	72.2																
7.0	66.4	66.3	66.2	61.9	55.4														
8.0	54.1	53.9	53.8	53.7	50.9	48.0	43.8												
9.0	45.5	45.2	45.1	45.0	44.9	44.8	42.5	38.4	35.1										
10.0	39.1	39.0	38.9	38.7	38.6	38.5	38.4	36.4	34.4	31.3	28.8								
12.0	30.4	30.2	30.1	30.0	30.0	29.9	29.8	29.6	29.5	29.4	27.2	24.8	22.7	20.8					
14.0	24.8	24.7	24.6	24.5	24.3	24.2	24.1	23.9	23.8	23.7	23.5	23.4	21.9	19.8	17.7	16.5	15.7	14.4	
16.0	20.8	20.7	20.6	20.4	20.3	20.2	20.1	20.0	19.9	19.8	19.6	19.5	19.4	19.2	16.9	15.5	14.9	13.6	11.5
18.0		17.7	17.6	17.5	17.5	17.4	17.2	17.0	16.9	16.8	16.6	16.5	16.4	16.2	16.1	14.6	14.1	12.7	10.9
20.0		15.5	15.4	15.3	15.1	15.0	14.9	14.7	14.6	14.5	14.3	14.2	14.1	13.9	13.8	13.7	13.2	12.0	10.3
22.0			13.6	13.5	13.3	13.2	13.1	12.8	12.7	12.6	12.5	12.4	12.3	12.1	12.0	11.9	11.7	11.1	9.7
24.0				12.1	11.9	11.8	11.7	11.5	11.4	11.3	11.1	10.9	10.8	10.6	10.5	10.3	10.2	10.0	9.1
26.0					10.6	10.5	10.4	10.2	10.1	10.0	9.9	9.8	9.6	9.5	9.3	9.0	8.9	8.8	8.5
28.0					9.7	9.5	9.4	9.3	9.1	8.9	8.8	8.6	8.5	8.3	8.2	8.1	7.9	7.8	7.6
30.0						8.6	8.5	8.3	8.2	8.1	7.9	7.8	7.7	7.5	7.5	7.3	7.1	6.9	6.7
32.0							7.7	7.5	7.5	7.4	7.2	7.1	6.9	6.7	6.6	6.5	6.3	6.2	6.0
34.0								6.8	6.8	6.7	6.5	6.4	6.2	6.1	5.9	5.8	5.6	5.5	5.2
36.0									6.2	6.2	6.1	5.9	5.8	5.7	5.5	5.3	5.2	5.0	4.6
38.0										5.7	5.6	5.4	5.3	5.2	5.0	4.8	4.6	4.4	4.0
40.0											5.1	4.9	4.8	4.7	4.5	4.3	4.1	3.9	3.5
42.0												4.4	4.3	4.2	4.0	3.8	3.6	3.4	3.0
44.0													4.0	3.9	3.7	3.5	3.4	3.2	2.8
46.0														3.4	3.3	3.1	3.0	2.7	2.5
48.0															2.9	2.6	2.5	2.3	2.1
50.0																2.4	2.3	2.2	2.0
52.0																	2.1	2.0	1.8
54.0																		1.7	1.5
56.0																			1.3

Notes:

- Capacities shown are in metric tons and are based on 75% of minimum tipping loads—over the side—with machine standing level on firm supporting surface under ideal job conditions. Deductions from the lifting crane capacities must be made for weight of hook block.

Kind of hook block (t)	100	50	30	10
Weight of hook block (t)	1.33	0.84	0.64	0.40

- When operating of the main boom peak sheaves with jib on boom the following deductions in machine lifting capacities must be made.

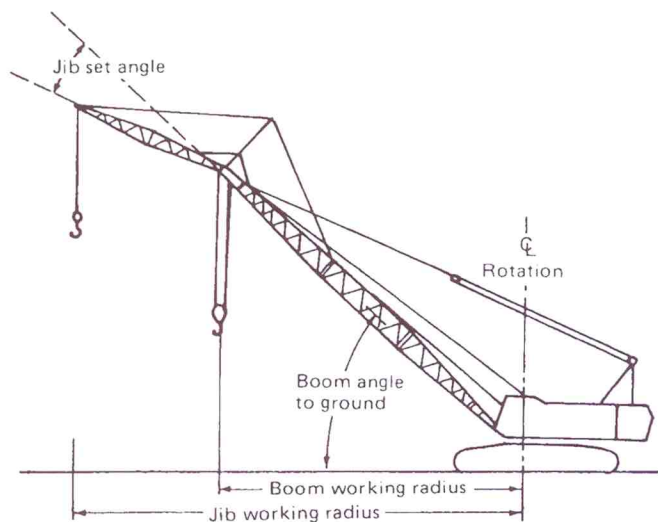
Jib length (m)	12.20	18.30	24.40
Weight to be deducted (t)	2.7	3.1	4.1

- High gantry is required and side frames must be extended for all operating conditions.

LS-238RH-5 JIB CAPACITIES:

(in metric tons)

Jib length (m)	Jib set angle	Max. jib Capacities
12.20	10°	12.0
	30°	8.0
18.30	10°	10.0
	30°	6.0
24.40	10°	6.0
	30°	4.5



Notes:

- The jib capacities are equal to the crane lifting capacities of the main boom on which the jib is fixed except that they are restricted by the maximum jib capacities shown left.
- Jib working radius does not exceed the working radius of the main boom which fits the jib.
- Deductions from the jib capacities must be made for weight of jib hook block (0.12 t).
- Available boom length to attach the jib is from 39.65m to 64.00m. The maximum jib length is 24.40m.
- The jib set angle to boom must not exceed 30°.