

New Dimensions
in Motion

SPECIFICATIONS

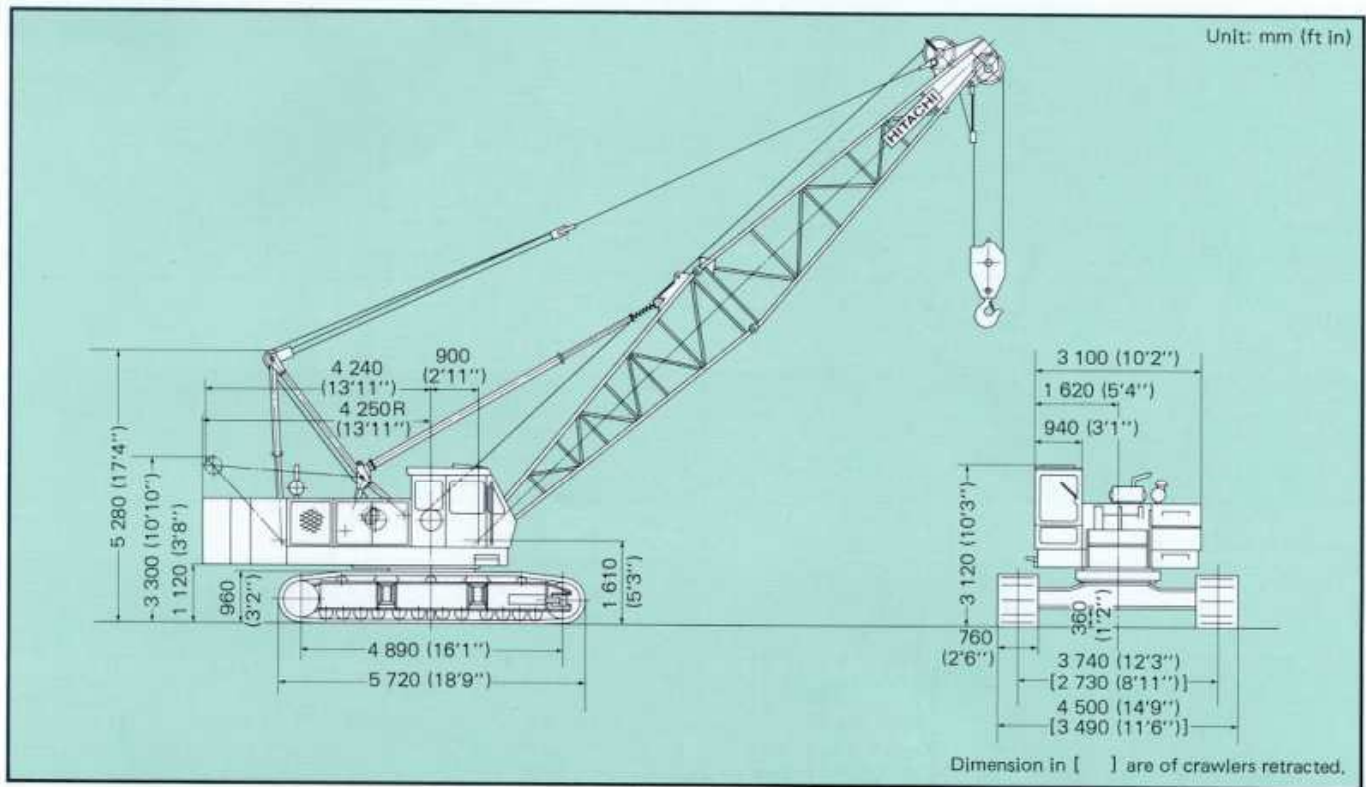


KH230-3

HYDRAULIC CRAWLER CRANE

Max. Lifting Capacity : 60 000 kg (132 200 lb) at 3.7 m (12'2'')

Dimensions



Specifications

| | | |
|---------------------------|--|---|
| Maximum rated load | | 60 000 kg (132 200 lb) at 3.7 m (12'2'') working radius |
| Boom | Basic boom length | 13.0 m (42'8'') |
| | Max. boom length | 52.0 m (170'7'') |
| | Jib length | 9.0 m (29'6'') to 18.0 m (59'1'') |
| | Max. boom with jib length | 64.0 m (210'0'') [46.0 m (150'11'') + 18.0 m (59'1'')] |
| Swing speed | | 0 to 3.5 min ⁻¹ (0 to 3.5 rpm) |
| Travel speed* | | 0 to 1.5 km/h (0 to 0.93 mph) |
| Gradeability | | 17° (30%) |
| Ground pressure | | 0.75 bar (0.75 kgf/cm ² , 10.7 psi) |
| Operating weight | Equipped with basic boom, 60 000 kg (132 200 lb) capacity hook and 22 800 kg (50 300 lb) counterweight | 59 300 kg (130 700 lb) |
| Engine | Model | HINO EM100 |
| | Rated horsepower | 110 kW (150 PS) at 2 000 min ⁻¹ (2 000 rpm) |

*Speeds may vary with load